



ARISTON

SPARE PARTS EXPLODED VIEW STORAGE ELECTRIC WATER HEATERS

Model

ANDRIS LUX EU

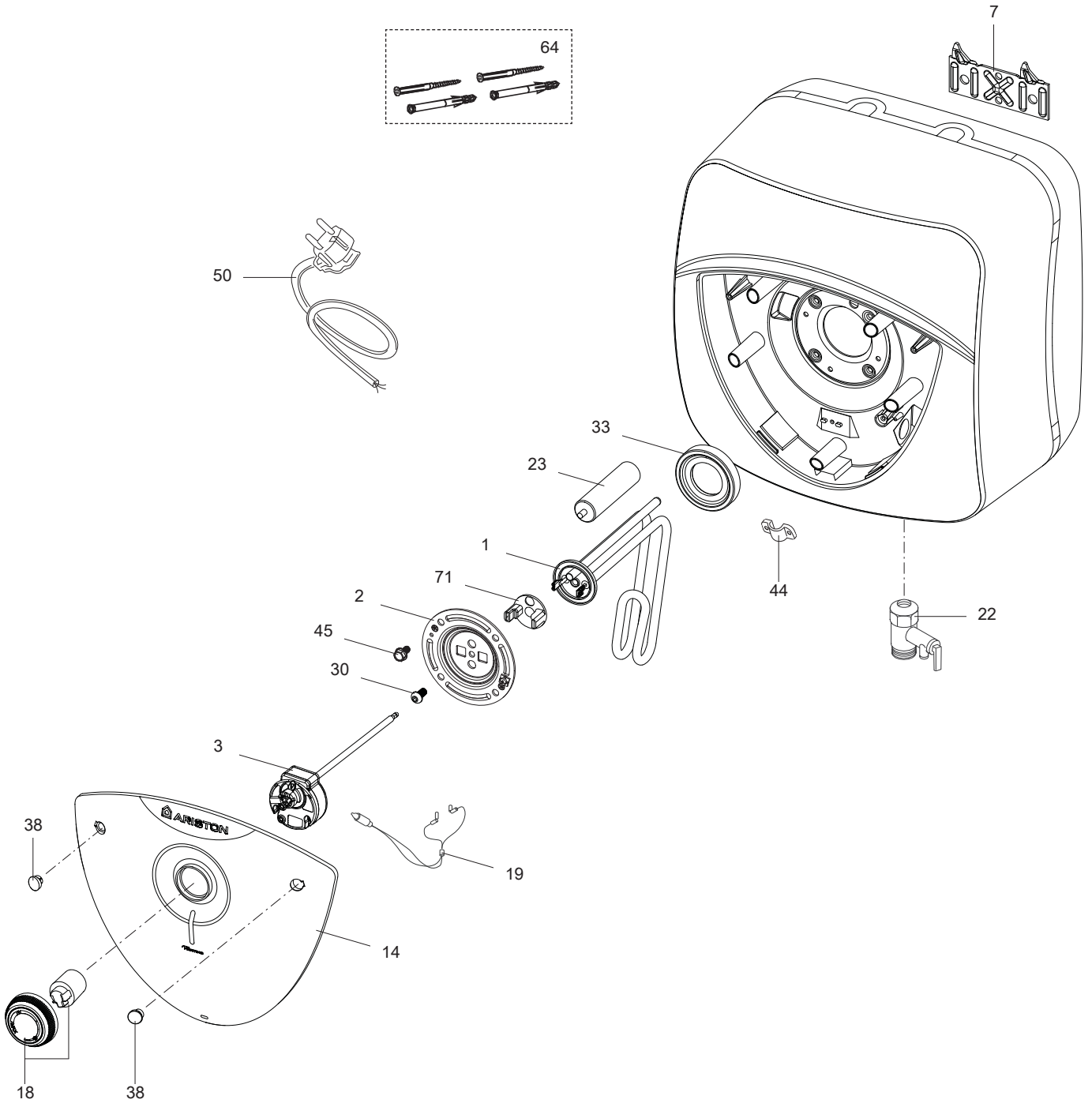
R8217210-04 - 28/09/2016

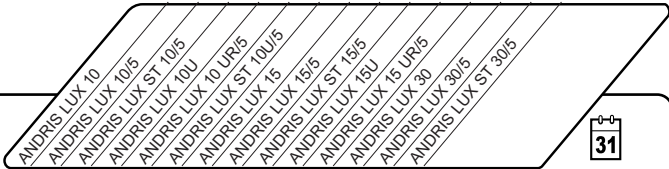
ANDRIS LUX EU

Storage Electric Water Heaters

1	3100323	ANDRIS LUX 10 EU	06-2015	-
2	3100534	ANDRIS LUX 10 OR /5 EU	06-2015	-
3	3100711	ANDRIS LUX ST 10/5 EU	09-2015	-
4	3100322	ANDRIS LUX 10U EU	06-2015	-
5	3100535	ANDRIS LUX 10 UR /5 EU	06-2015	-
6	3100709	ANDRIS LUX ST 10U/5 EU	09-2015	-
7	3100325	ANDRIS LUX 15 EU	06-2015	-
8	3100536	ANDRIS LUX 15 OR /5 EU	06-2015	-
9	3100712	ANDRIS LUX ST 15/5 EU	09-2015	-
10	3100324	ANDRIS LUX 15U EU	06-2015	-
11	3100537	ANDRIS LUX 15 UR /5 EU	06-2015	-
12	3100326	ANDRIS LUX 30 EU	06-2015	-
13	3100538	ANDRIS LUX 30 /5 EU	06-2015	-
14	3100713	ANDRIS LUX ST 30/5 EU	09-2015	-

Col	Reference	Model type	Begin	End
-----	-----------	------------	-------	-----



☉⇒	Description	Manf. Pt. N	Type																			From	to
				1	2	3	4	5	6	7	8	9	10	11	12	13	14	15	16	17	18		
0001	HEATING ELEMENT 1200W 220-240V	65114900								•	•	•											
	HEATING ELEMENT 1200W 220-240V	65114905			•	•		•	•														
	HEATING ELEMENT 1500W 220-240V	65114894													•	•							
	HEATING ELEMENT 2000W 220-240V	65115075		•			•																
	HEATING ELEMENT 2000W 220-240V	65115077							•		•		•										
0002	FLANGE (4 HOLES)	65114661		•	•	•	•	•	•	•	•	•	•	•	•	•	•	•	•		12/15		
	FLANGE (4 HOLES)	65115359		•	•	•	•	•	•	•	•	•	•	•	•	•	•	•	•	01/16			
0003	THERMOSTAT	65114891													•	•	•						
	THERMOSTAT	65114908		•	•	•																	
	THERMOSTAT	65115012					•	•	•														
	THERMOSTAT	65115013								•	•												
	THERMOSTAT	65115014											•										
	THERMOSTAT	65115015							•														
	THERMOSTAT	65115016										•											
0007	HEATER WALL HANGING BRACKET	570341		•	•	•	•	•	•	•	•	•	•	•	•	•	•	•	•				
0014	PLASTIC COVER (COMPLETE)	65115145		•	•	•	•	•	•	•	•	•	•	•									
	PLASTIC COVER (COMPLETE)	65115148													•	•	•						
0018	COMPLETE KNOB (REGULATION)	65115024		•	•	•	•	•	•	•	•	•	•	•	•	•	•	•	•				
0019	SIGNAL LAMP	65111550		•	•	•	•	•	•	•	•	•	•	•	•	•	•	•	•				
0022	SAFETY VALVE WITH LEVER (1/2" 8,5 BAR)	571730			•	•		•	•		•	•		•	•	•	•	•	•				
0023	ANODE D:21,3 L:110 M5-M8	65103768-01		•	•	•	•	•	•	•	•	•	•	•	•	•	•	•	•				
0030	SCREW M6X12	993000		•	•	•	•	•	•	•	•	•	•	•	•	•	•	•	•				
0033	FLANGE GASKET	65114660		•	•	•	•	•	•	•	•	•	•	•	•	•	•	•	•				
0038	SCREW COVER	65115133		•	•	•	•	•	•	•	•	•	•	•	•	•	•	•	•				
0044	CABLE CLAMP	573266		•			•			•		•		•									
0045	FLANGE SCREW M6X12	65114656		•	•	•	•	•	•	•	•	•	•	•	•	•	•	•	•				
0050	POWER CABLE	570096		•			•			•		•		•									
0064	SCREWS WITH PLASTIC DOWELS	65116253		•			•			•		•		•									
0071	TERMINAL SHIELD (GREEN)	65114895													•	•							
	TERMINAL SHIELD (WHITE)	65115076		•								•		•									
	TERMINAL SHIELD (YELLOW)	65114901			•	•		•	•		•	•		•									

LIST OF THE ABBREVIATIONS

HW	: Hot water.
CW	: Cold water.
C	: Ceramic resistance (normal heating).
Ca	: Ceramic resistance (accelerated heating)
TP	: Immersion heater.
1F	: With fittings.
2F	: Without fittings.
3F	: With fittings and another outlet connection.
AMI	: With mixing valve.
SMI	: Without mixing valve.
PUISS	: Power of th appliance.
PN	: Appliance with normal pression.
LP	: Appliance with low pression.
PV	: Appliance with variable power.
PF	: Appliance with fixed power.

IDENTIFICATION PLATE

SERIAL NUMBER

6 Characters :
 Year of manufacture 03 09 08 Manufacturing day
 Month of manufacture

9 Characters :
 Year of manufacture M 12 10 0606 Sequential number
 Month of manufacture

14 Characters :
 SI-V-0B0 45 07 0001
 Sequential number
 Year of manufacture : 6 → 2004
 Month of manufacture : → 25 → January 43 → July 7 → 2005
 13 → February 29 → August 8 → 2006
 32 → March 40 → September etc ...
 35 → April 38 → October
 39 → May 51 → November
 45 → June 12 → December

15 Characters :
 Year of manufacture 02 11 00001 007843 Code appareil
 Month of manufacture Sequential number

21 Characters :
 Product reference 3200050 XX 08115 0000001
 Sequential number
 Year (08) / Manufacturing day (115)

22 Characters :
 Product reference 3200050 XX 070115 0000001
 Sequential number
 Year (07) / Month (01) / Manufacturing day (15)

The indications mentioned on the prices, commercial or technical literature and the scheme are written for your guidance and are available at a given time. The CONSTRUCTOR retains the power to modify the presentation, the form, the size, the conception or the material of the products.